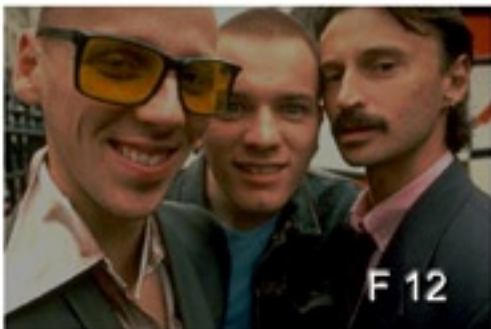


# using The iRiS

The Iris setting determines how much light is let into the lens.  
It can also affect the depth of field.



If the Iris is open too much, the shot will look overexposed like this.



If the Iris is not open enough, then shots can look too dark like this.



The Iris setting is displayed by an 'F' number and can usually be seen on your camcorder display screen. F numbers are usually between 1.6 and 16. Experiment to find out which settings work best in different conditions.

The Iris also changes the depth of field (The amount of the shot that is in sharp focus). A large F number gives a greater depth of field and enables everything in the shot to be in focus.

If you require just the foreground or just the background to be in focus, you should use a lower F number setting.